

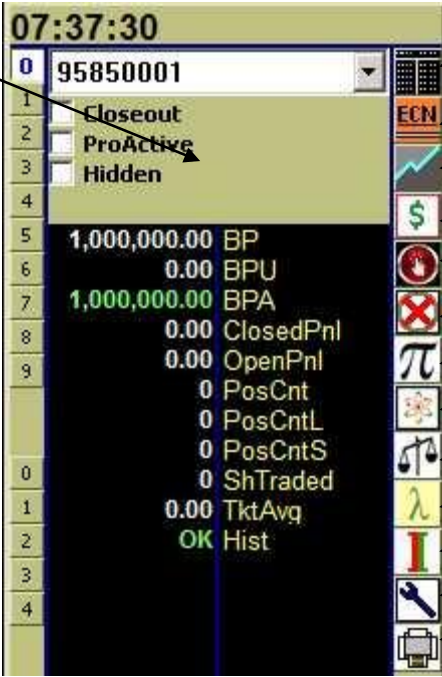
Main Bar

The Main Bar is vertical now, and includes the tool bar and Layers

Click and drag anywhere in here to move your entire layout at once

Workspaces - Mutually exclusive layouts. You can set keys to show each workspace. Allows you to have completely different layouts for different purposes or screen setups.

Layers - Appear on top of your workspace. Can set keys to toggle them on/off. Good for windows you just need to see once in a while.



MM box

ECN quote box

Chart window

Position window

Orders window

Executions window

Position Manager window

Account window

Filter Window

High/Low scroller window

Index Window

API link for Extensions

Prints window

****Reminder on Layers/Workspaces:** Even though you can't see them, they are pulling symbols and processing data. They don't use the resources for painting to the screen, though. If you aren't using them, delete them from your layout for better performance.

SETTINGS (Right-click >> Settings):

Item	Account	Symbol	Account
*BarPrice	Acct	BP	Acct
BP	Acct	BPU	Acct
BPA	Acct	BPA	Acct
BPU	Acct	ClosedPnl	Acct
BarMoney	Acct	OpenPnl	Acct
BarSize	Acct	PosCnt	Acct
ClosedPnl	Acct	PosCntL	Acct
Exp	Acct	PosCntS	Acct
ExpL	Acct	ShTraded	Acct
ExpLMax	Acct	TktAvg	Acct
ExpS	Acct	Hist	Acct
ExpSMax	Acct		
ExpTMax	Acct		
Fee	Acct		
Hist	Acct		
MPlnPrint	Acct		
MarkedPnl	Acct		
NetClPnl	Acct		
NetMPnl	Acct		

Setting	Value
Confirm Exit	<input checked="" type="checkbox"/>
Save Layout on Exit	<input type="checkbox"/>
MarketSorter on Idle	<input checked="" type="checkbox"/>
Close Dialog on Esc	<input type="checkbox"/>
Repeat Order Command on key held down	0
Repeat OrderBox Command on key held down	0
Stock Idle Minutes	1

Will ask you if you're sure you want to close Takion on exit.

Saves layout when you close Takion.

Computer processor cycles will update MS only when otherwise idle - makes sure L2 has priority. Should always be checked.

Esc key will take down dialog/order boxes.

How many times order key (or adjustable order key) will repeat if you hold it down.

How long before unused stock is unsubscribed.

RIGHT-click and drag to add items

Market Sorter

Right-Click items:

PriceFraction	How many decimal places to use
+/- Color	Turn coloring On/Off (up=green, dn=red)
Ticks	
✓ TopActive	Bring stock in Active MM box to top of window
Totals	Show totals at the bottom of the window
Millisec	Show milliseconds for time columns
Filter	Manage Filters
Link	
BBOX	Options to Find/Include/Exclude current stock in window
Columns	Opens list of available columns
Clipboard	Copy contents of window to clipboard for use in other programs (notepad, excel, Word, etc)
Scroll	Options to show/hide vertical and horizontal scroll bars, and option to scroll up or down
Db1 Click	Turn on/off ability to double-click stock in Sorter window and have it show in active MM box
Font	Ability to select font for this MS window only. Must check 'custom' in box that comes up for it to apply
Graphics	Go to graphics settings for this window
Prefix	Click this to type in a new name for the window – typing box will open at window header

FILTERS:

Net Change is for the Time Frame you select here. Day Net Change is always the change from the previous close.

Gets rid of ZVZZT, etc.

Only checked items will be active filters. They will turn green to show that they are active.

Use this area to make basket filters:
Type in the stocks you want to add at the bottom, click 'Include' after each one. Check 'Use Include' at the top, and UNCHECK 'Real' under the Test Stock section on the far left of the window.

Hi/Lo Count is # of new Daily highs/lows in the past 2 minutes.
For Hi/Lo scrollers, check this box and select whether you want to see Highs or Lows.

COLUMNS:

**All Imbalance columns start with Imb.*

Generic:	
ImbEx	Imbalance for exchange where stock is listed (uses ImbNYInf for NYSE)
ImbEXvol%	ImbEx as % of daily volume
Nasdaq:	
ImbNQ	main imbalance
ImbNQfar	Far price
ImbNQmatch	Matched shares
ImbNQnear	Near price
ImbNQprice%	calculated as $\text{abs}(\text{ImbNQnear} - \text{InsideBid/Offer}) / \text{InsideBid/Offer}$ – Uses inside bid for Sell Imbalance, inside offer for Buy imbalances
ImbNQPVI	Price Variance Indicator
ImbNQref	Reference Price
ImbNQref%	calculated as $\text{abs}(\text{ImbNQnear} - \text{ImbNQref}) / \text{ImbNQref}$
ImbNQthru	ImbNQref-Last
ImbNQtime	Last imbalance update time
ImbNQtype	Type of Imbalance (Open or Closing)
ImbNQvol%	calculated as $\text{abs}(\text{ImbNQ} / \text{Volume})$
NYSE/AMEX:	
ImbNY	Regulatory Imbalance
ImbNYclr	Clearing price for Regulatory imbalance (similar to Nasdaq Near Price)
ImbNYclrInf	Clearing price for Informational imbalance (similar to Nasdaq Near Price)
ImbNYdeltaInf	Change from last update for Informational Imbalance
ImbNYfar	Closing Only Clearing Price for regulatory imbalances (message flag only exists for closing cross)
ImbNYfarInf	Closing Only Clearing Price for Informational Imbalances (message flag only exists for closing cross)
ImbNYinf	Informational Imbalance
ImbNYmatch	Paired quantity for regulatory imbalances
ImbNYmatchinf	Paired quantity for informational imbalances
ImbNYprice%	calculated as $\text{abs}(\text{ImbNYnearInf} - \text{ImbNYref}) / \text{ImbNYref}$
ImbNYref	Reference Price for Regulatory Imbalances
ImbNYref%	
ImbNYrefInf	Reference Price for Informational Imbalances
ImbNYrefInf%	
ImbNYthru	
ImbNYthruInf	
ImbNYtime	Last regulatory imbalance update time
ImbNYtimeInf	Last informational imbalance update time
ImbNYtype	
ImbNYnear	Continuous Book Clearing Price for regulatory imbalances
ImbNYnearInf	Continuous Book Clearing Price for informational imbalances
ImbNYvol%	calculated as $\text{abs}(\text{ImbNYinf} / \text{Volume})$
ImbNYssr	SSR Filling Price (takes into account possible short sale restrictions) – message flag only exists for opening cross
Imb%RI	$\text{ImbNYInf} / \text{ImbNY} * 100$. Informational Imbalance compared to Regulatory Imbalance
Imb%IP	$\text{abs}(\text{ImbNYInf}) / (\text{abs}(\text{ImbNYInf}) + \text{ImbNYmatchInf}) * 100$. What % of the Informational Imbalance is left?
ARCA:	

ImbARC	Total Imbalance
ImbARCAuc	
ImbARCFar	
ImbARCmatch	Volume
ImbARCmkt	Market Imbalance
ImbARCnear	IndicativeMatchPrice
ImbARCprice%	calculated as $\text{abs}(\text{ImbARCnear} - \text{InsideBid or Offer}) / \text{InsideBid or Offer}$ – Use inside bid for Sell Imbalance, inside offer for Buy imbalances
ImbARCref	
ImbARCref%	
ImbARCthru	
ImbARCtime	Last imbalance update time
ImbARCtype	Type of imbalance ('O'open, 'M'market,'H'halt,'C'closing)
ImbARCvol%	$\text{abs}(\text{ImbARC}/\text{Volume})$

Creating Keys

In Takion, you create your own trading keys. First you create them in the 'Orders' tab, then map them to specific keys in the 'Commands' tab.

Stop Orders:

Native: Sends stop to venue, if venue allows them.
Synthetic: Stop is managed on Takion back end
Trailing: Moves stop as market moves.

Delta references limit price.
 Drop down box below offset determines what price triggers the stop: bid/ask/midpoint/print

Example:

To set a buy stop when the stock prints \$25, with a limit at \$25.10, set the drop-down to 'Print', set the Delta as -0.10, then set the limit in the order box to \$25.10.

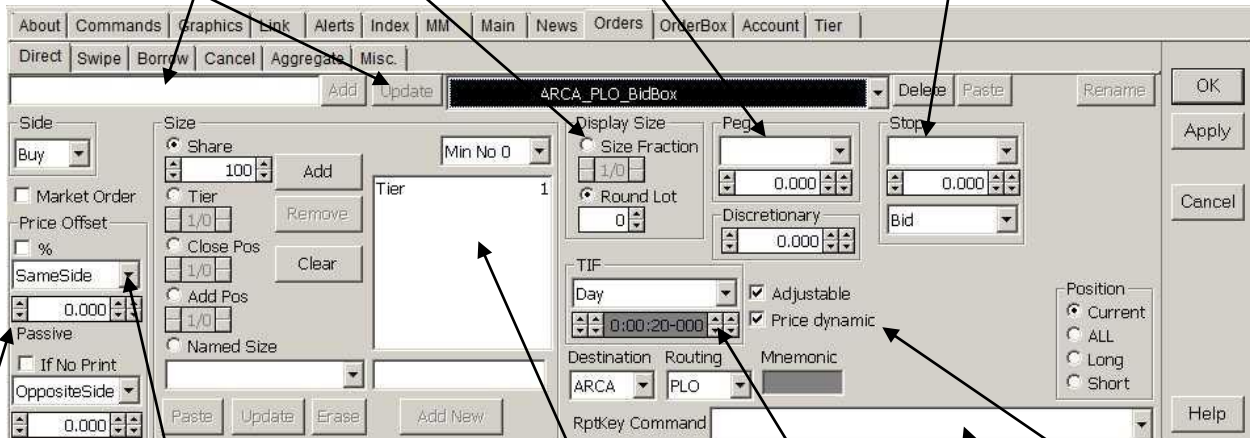
Trailing Stops – Delta will usually be negative:
 TrailingBuyStop will initialize to LimitPrice-Delta (higher price), trigger only moves DOWN.
 TrailingSellStop will initialize to LimitPrice+Delta (lower price), trigger only moves UP.
 Note: Limit price will remain static, it will not change as stop price does. Check 'Market Order' to trigger stop as market.

To **create** a key, type the name of the key in the box and hit 'Add'. When you update any of the key's settings, the Update button with highlight to remind you to click Update to keep your changes.

Display Size: you can set it for a fraction of your Order Size, or to a specific size. For hidden orders, set RoundLot=0.

Peg Orders:
Primary: Peg to Same side
Neutral: Peg to MidPoint
Market: Peg to Opposite side

 Price below is delta from Peg reference (+ = more aggressive, neg = passive. Must be 0.00 for Midpoint)



PriceOffset: Set the initial limit price of an order.

SameSide: Bid price for Buy, Offer price for sell

OppositeSide: Offer price for Buy, bid price for Sell

ClosePrice = Yesterday's closing price

TClosePrice = Today's closing price

Adjustment from reference price (underneath will show if you are setting the price to be more aggressive or passive)

% checkbox will change Adjustment to a percentage. e.g. 1.00 = 1% - Same Side Buy order in \$100 stock will initialize price to \$110.

Order Size:

Select options on the left and click Add and Remove to create list. Drag list items up and down to set sequence, and use drop-down box to tell Takion in what order to cycle through them.

Example:

To create Closeout Keys that default to Tier if you are flat or adding to a position:

Add "ClosePos" and "Tier" to the list, slide "ClosePos" to the top of the list, and select "First No 0" from the drop down list.

Note: 1/0 and 1/1 are the same thing. You can use this to select a fraction of your Tier or Position.

TIF:

Day: Market Hours

OnOpen: Opening Imbalance orders

IOC: Immediate or Cancel

FillOrKill: Execute entire order size or nothing. No partial fills.

Extended: All times, including pre-and post-market.

Milliseconds: Set a specific duration.

OnClose: Closing Imbalance orders

Adjustable=Order Box comes up (unchecked=hotkey)
 PriceDynamic=Price in OrderBox changes with inside price in L2

Repeat Key command:

What happens on successive strikes of key that launches this order.

Order Examples:

Buy stop to close position. Initialize to a stop price .10 above inside offer with a limit .15 above inside offer. Stop will trigger based on last print:

The screenshot shows a trading software window with the following configuration for a 'StopBuyClose' order:

- Side:** Buy
- Price Offset:** 0.150 (Aggressive)
- Stop:** Synthetic, -0.050
- TIF:** Day, Adjustable, Price dynamic
- Destination:** NSDQ, Routing: ProA
- Position:** Current

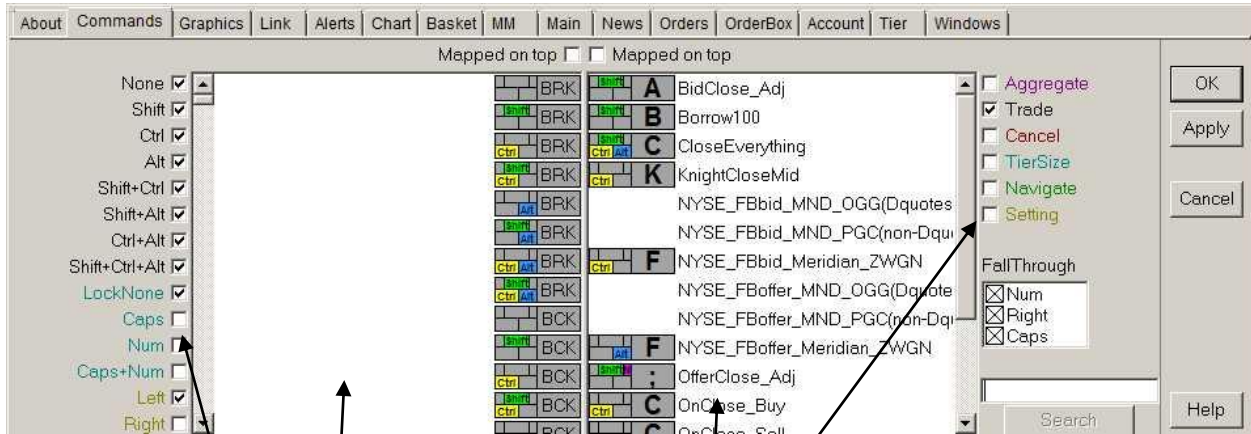
*Sell stop would be the same, with Side changed to Sell. Resulting order would initialize to stop price .10 below inside bid with limit .15 below the inside bid.

Bid for Tier Size – Adjustable. Key will bring up a buy box initialized to tier size at the bid price, and will follow the bid price until user manually changes price. Order details can be changed before entering order.

The screenshot shows a trading software window with the following configuration for a 'Bid_Adj' order:

- Side:** Buy
- Price Offset:** 0.000 (Passive)
- Stop:** Bid, 0.000
- TIF:** Extended, Adjustable, Price dynamic, Close Box
- Destination:** NITE, Routing: FANa
- Position:** Current

Mapping Keys



This side shows all the available keystrokes.

Filter which keys are shown by checking boxes to the left

This side shows all the available functions.

Filter which categories of keys are shown by checking boxes to the right.

FallThrough:
Takion allows you to set any keypress combination as a function. For example, LeftShift+A and RightShift+A can be different functions if you like. Also, you could set up two completely different sets of keys – one set with CapsLock ON and one with CapsLock OFF.

To override this, you can set keys to 'Fall Through'. This tells Takion how to search for your key if the initial keypress combo isn't mapped to anything. You can rearrange these in any order. Takion will go through the checked options in the order you set:

Example (assume you haven't set any functions yet):
You hit RightShift+A with CapsLock OFF and NumLock ON. With the settings above, Takion will look for the key like this:

Initial keypress: NumLockON + CapsLockOFF + RightShift + A. Not mapped to anything, so....
 Check NumLockOFF+ CapsLockOFF + RightShift + A. Not mapped to anything, so....
 Check NumLockOFF + CapsLockOFF + LeftShift + A. Not mapped to anything, so....
 Check NumLockOFF + CapsLockON + LeftShift + A. Not mapped to anything, so error message appears in PosMan that no key mapped.

NOTE: Once Takion checks the fall-through, it stays there, so once it falls through to NumLockOFF, it only looks at NumLockOFF from then on. For example, with the above settings, if you map a key to NumLockON +CapsLockOFF + LeftShift +A, Takion won't find it, since it falls through to NumLockOFF before it checks the LeftShift.

If you map everything to NumLockOff + CapsLockOFF + LeftShift with the settings above, all keys should work regardless of the combination of CapsLock, NumLock or Shift key you use.

MM Box

TITLE Area
To open it, grab the blue line just under the stock name and drag it down.

LEVEL1 Area
To open it, grab the blue line on the left side and drag it out – that shows the names. Grab the blue line on the left again and drag it out to show the values.

NVEC NVE Corporation - Common Stock									
Last	58.454	Net	0.354	Vol	48,315	Tier	100	Pend	pPrice
Open	57.830	Hi	58.970	Lo	57.160	Cls	58.100	TCl	58.350
								HTB	No
60,651	YVol	1	nsdq	56.65		5	arca	58.99	3
56.650	Bid	1	arca	56.64		2	nsdq	59.00	
58.990	Ask	2	arca	56.41		2	arca	59.63	
100	Tier	2	arca	55.88		2	arca	60.26	
56.650	bid	2	arca	55.41		2	arca	60.63	
170	bSiz	2	arca	55.30		2	arca	60.84	
58.990	ask					1	nsdq	61.05	
	Penk					1	nsdq	61.96	
0.250	cBot	2	arca	54.21		2	arca	61.96	
500	aSiz	2	arca	53.75		1	nsdq	62.00	
	NSDQ Exd	2	arca			1	nsdq	62.43	
0	lmbf					2	arca	62.43	
0	lmbf					1	nsdq	63.25	
	CR	1	nsdq	52.30		1	nsdq	63.25	

SETTINGS:

L1 and Title areas:

Level2	Level1	Title		L1	Lines
%Net	L1	Last		L1	0
Ask	L1	Net		L1	1
Bid	L1	Vol		L1	2
CB	L1	Tier		L1	3
Cls	L1	Pend		Pos	
Div	L1	pPrice		Pos	
Exch	L1				
Fin	L1				
HTB	L1				
Hi	L1				
ImEXNear	L1				
lmbARC	L1				
lmbARCAuc	L1				
lmbARCFar	L1				
lmbARCmatch	L1				
lmbARCMkt	L1				
lmbARCnear	L1				

Right-click and drag to add items to the list. You can also right-click under 'Lines' to add/delete entire lines.

Recycle Colors: re-use colors rather than leave as white.
Color Background: Make set colors the background instead of text
Position Line: Display line at my average price

Level2:

Level2	Level1	Title	Filter	Sort	QuoteCondition

Recycle Colors Color Background Position Line Price with Commas
 Size: Left Middle Right Mirror
 Lowercase ECN MM Exchange Exchange
 Warn

Quote Color

Use Quote Color

MMid: Find: BATY

Background MMid only

Text MMid only

Add Remove Clear Paste

Set location of Size column in L2

Previous Stock Count: Last x Stocks you typed into MM box that Takion will remember.
Color Price Range: Range each color line on the left side will encompass (in this example, the first .03 of the quotes will be light blue)
Blank Line Price Range: Show a blank line if there is a gap in quotes bigger than set value
Block Aggr Order Price Range: Blocks orders if spread is wider than set value. Check warn to have Takion warn you instead of rejecting order.

To highlight MMIDs, type the MMID in the box, then choose whether to change the background and/or text for that MMID by checking the boxes and adjusting the colors. You can make the changes happen to just the MMID or to the whole quote line with the MMID checkbox.
NOTE: If you want to change an existing entry, select it and hit "Paste" to make its color scheme initialize the boxes to the left. After making your changes, hit 'Add' to apply them. Just making changes on the left and hitting 'Apply' won't work.

FILTER (all MM boxes):

Level2	Level1	Title	Filter	Sort	QuoteCondition
Market Open			Market Closed		
AMEX			1		0
ARCA	ALL				ALL
BATS	ALL				ALL
BATY	ALL				ALL
BOSX	1				0
CBOE	1				0
CHSX	1				0
EDGA	ALL				ALL
EDGX	ALL				ALL
FINR	1				0
NSDQ	ALL				0
NSDQ MM	ALL				0
NSEX	1				0
NYS	0				0
NYSE	ALL				0
PHLX	1				0

Set different levels of filtering depending on whether market is open or closed. Generally turn off exchange quotes outside of market hours.

NYSE will designate some specialist quotes as slow quotes. Check this box to get rid of those slow quotes, which can make it appear the market is crossed.

FILTER (MM box specific - right click and hit 'Filters'):

0 AAPL Apple Inc. - Common Stock

Last 379.950 Net 0.530 Vol 15,731,137 Pend pPrice Gps
 Open 382.360 Hi 384.520 Lo 378.000 Cls 380.480 TCls 380.440

CB HTBNo cBorrow 0.050 Borrowed

Quantity	Exchange	Price	Quantity	Exchange	Price	Time
1	arca	379.61	1	arca	379.98	17:51:49
1	arca	379.52	1	arca	379.99	17:51:49
1	bats	379.36	5	arca	380.00	17:50:04
2	arca	379.95	2	AR	379.85	17:48:33

Custom

Market Open			Market Closed		
AMEX		1	AMEX		0
ARCA	ALL		ARCA	ALL	
BATS	ALL		BATS	ALL	
BATY	ALL		BATY	ALL	
BOSX	1		BOSX	0	
CBOE	1		CBOE	0	
CHSX	1		CHSX	0	
EDGA	ALL		EDGA	ALL	
EDGX	ALL		EDGX	ALL	

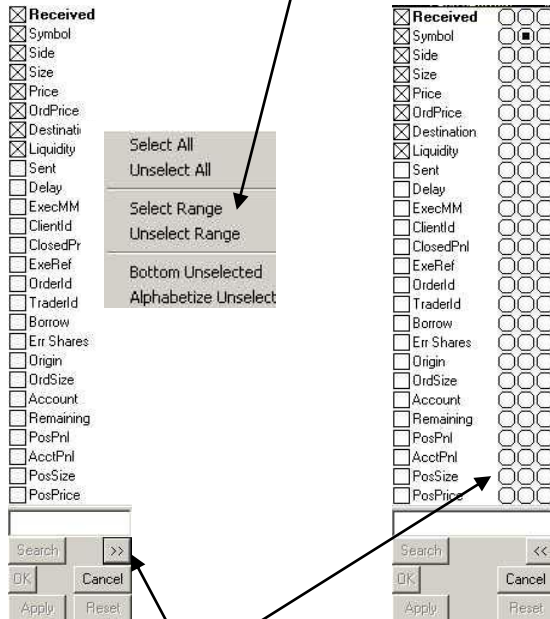
Buttons: OK, Apply, Cancel, Reset, Help

Same filter options as above, but they will apply ONLY to this MM window. You must check 'Custom' to enable them.

*Fonts work the same way – Right-click and go to 'Graphics' in the Settings window to change them for all MM windows, right-click and hit 'Font' to change for this MM window only (remember to check 'Custom' to enable MM-specific font).

Options for any window with columns: Right-click>>Columns

Select/Unselect Range: Select the column at one end of the range, then right-click on the other end of the range and Select/Unselect at the entire range at once.



Click the >> button to open panel that will let you set each column as left-, center-, or right-justified.

Known Issues:

Global Proactive interferes with NITE FANaggressive

NITE converts all passive or neutral odd-lot orders to aggressive.

NYSE orders sent as hidden will cancel back if stock goes to 'manual' mode (Closing Cross, halts, slow quote mode, circuit breaker, LRP, etc)